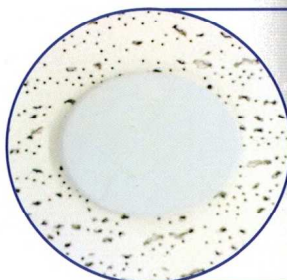


## Commercial Sprinkler Heads

- CE, LPCB, UL
- Standard Spray Upright, Standard Spray Pendent, Horizontal Sidewall, Conventional, Flush and Concealed
- Brass, Chrome, paint finish
- Standard Response and Quick Response



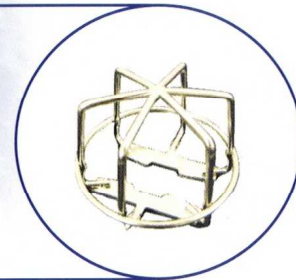
## Residential Sprinkler Heads

- Flush pendent
- Concealed / flush pendent sprinkler heads
- UL
- White and chrome plated. (other colours available)



## Sprinklers Accessories

- Sprinkler cabinets 12, 24, and 36 sprinkler heads
- Single, two piece and threaded Escutcheons
- Sprinkler guards
- Baffle plates



### HEAD OFFICE:

#### Rapidrop Global Limited

Rutland Business Park  
Newark Road, Peterborough PE1 5WA  
UNITED KINGDOM

Tel: +44 (0) 1733 847 510 . Fax: +44 (0) 1733 553 958  
Email: [rapidrop@rapidrop.com](mailto:rapidrop@rapidrop.com)

### MIDDLE EAST OFFICE:

#### Rapidrop Middle East LLC

Unit 5, Building No 7, Dubai Investment Park,  
P.O. Box 232031  
DUBAI, UAE

TEL: +971 4 8856671 . FAX: +971 4 8856672  
Email: [uae@rapidrop.com](mailto:uae@rapidrop.com)

Diese Informationsbroschüre  
wurde Ihnen überreicht von:  
**Umbra FSP GmbH**

Telefon +49 (0)30 390672 17  
Fax +49 (0)30 390672 43

E-Mail [info@umbra-fsp.de](mailto:info@umbra-fsp.de)

[www.umbra-fsp.de](http://www.umbra-fsp.de)

[www.ecolexis.de](http://www.ecolexis.de)



Distribution centres in UK, Dubai, Denmark, Turkey & South Africa





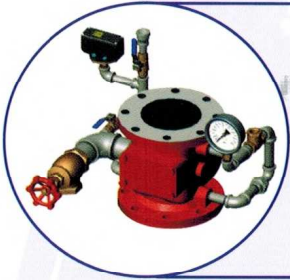
## The Rapidrop® Flexible Sprinkler Connection

- LPCB, UL, APSAD, CNBOP, SBSC
- Maximum working pressure 16 Bar (UL 12 Bar)
- Length 780 mm to 3220 mm
- Support bracket system to suit all types of suspended ceiling systems and sprinkler heads (Armstrong TechZone approved)



## The Rapidrop® Braided Flexible Sprinkler Connection

- FM, VdS
- Maximum working pressure 12 Bar
- Length 780 mm to 2540 mm
- Support bracket system to suit all types of suspended ceiling systems and sprinkler heads



## Wet Alarm Valves

- CE, LPCB, UL, FM
- Sizes 80 mm to 200 mm
- Flanged or grooved connections
- Pre trimmed FM or CE
- Optional retard chamber



## Dry Alarm Valves

- CE, LPCB, UL, FM
- Sizes 80 mm to 150 mm
- Flanged or grooved connections
- Pre trimmed FM or CE
- Optional accelerator



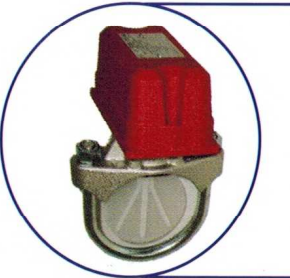
## Deluge Valves

- UL
- Sizes 80 mm to 200 mm
- Flanged connection, Globe, or Angle Design
- Wet Pilot, Dry Pilot or Electric Actuation



## Water Spray Nozzles

- UL
- Medium Velocity
- High Velocity
- High Velocity with Strainer



## Electrical Switches

- CE, LPCB, UL, FM, VdS
- Water Flow Detector model WFD
- Pressure Switch model PS10, PS40
- Pressure Switch model 1381
- OSY Gate Valve Switch model OSY2

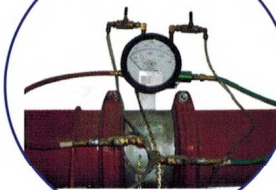






## Flow Meters

- FM - Grooved, butt weld, and Wafer design
- Sizes 80 mm to 300 mm
- LPCB - Grooved and Wafer design
- Sizes 50 mm to 200 mm



## Butterfly Valves

- CE, UL, FM, APSAD
- Grooved and Wafer design
- Maximum working pressure 20 Bar
- Gearbox operation with factory installed tamper switches



## Resilient Seat Gate Valves

- UL, FM, BS5163
- Handwheel operated non-rising stem. MWP 16 Bar
- OS&Y Flanged and Grooved connection. MWP 17 & 20 Bar
- PIV Non Rising Stem. Flanged and mechanical joint connection. MWP 17 & 20 Bar



## Indicator Posts

- UL, FM
- Horizontal - Wall Post
- Vertical - Adjustable Post



## Check Valves

- UL, FM, BS5153
- Flanged. Sizes 50 mm to 300 mm. MWP 20 Bar
- Grooved. Sizes 50 mm to 200 mm. MWP 20 Bar
- Wafer. Sizes 100 mm to 300 mm. MWP 12 Bar



## Y Strainers

- UL
- Flanged and grooved connections
- Sizes 65 mm to 300 mm
- Maximum working pressure 12 Bar



## Grooved Couplings and Fittings

- UL, FM, LPCB, VdS
- Paint and galvanised finish
- Rigid and Flexible couplings
- Fittings include elbows, tees, mechanical tees, sprinkler tees, reducers, end caps, flange adaptors





## Dry Riser Systems

- Breeching Inlets. 2 and 4 way to BS5041
- Landing Valve. Flanged and threaded to BS5041, BS5154
- Air Release Valves
- Cabinets to BS5041 plus bespoke designs
- Galvanised pipe, couplings and pipe supports



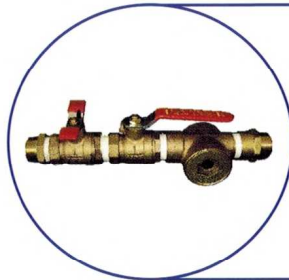
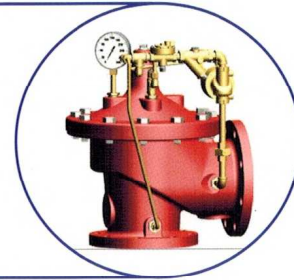
## Wet Riser Systems

- High Pressure Regulating Valves to BS9990, BS5041, BS5154
- Cabinets to BS504 plus bespoke design



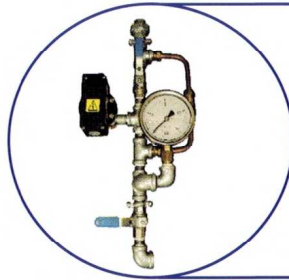
## Pressure Relief / Reducing Valve

- Relief. UL, FM. Sizes 80 mm to 200 mm  
Flanged connection, globe or angle design
- Reducing. UL. Sizes 40 mm to 200 mm  
Flanged or grooved connections. Globe or angle design



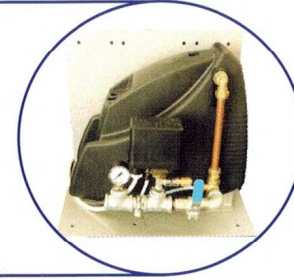
## Flow Test Products

- UL test and drain valves c/w sight glass
- Zone assemblies. Sizes 65 mm to 150 mm includes pre wired isolation valve and flow switch, 50 mm drain and test connection



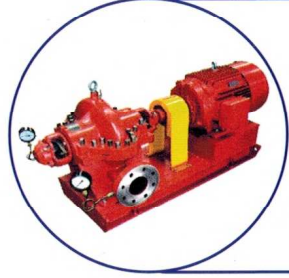
## Pump Room Equipment

- Jockey, duty and stand-by pump initiation boards
- Single switch to BS5306
- Double switch to EN12845
- Packaged compressor units for dry and pre actioned systems



## Welding Branchlets

- UL, FM
- Outlet size 15 mm to 65 mm
- Maximum working pressure. 20 Bar
- Chamfered and profiled design



## Fire Pumps

- UL, FM
- End suction, split case
- Skid mounted including electric motor, diesel engine drive, controller, fuel tanks emergency power supply